

2018 IDAHO

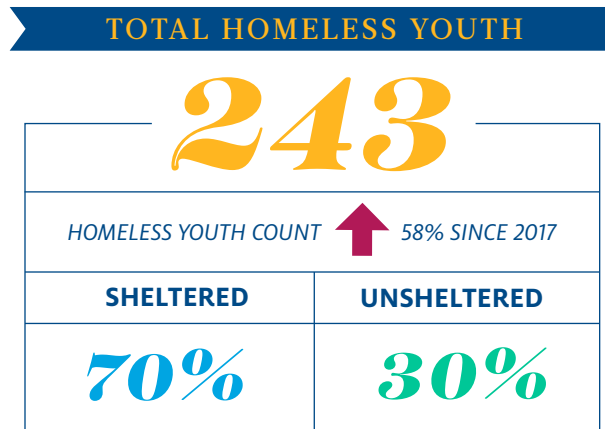
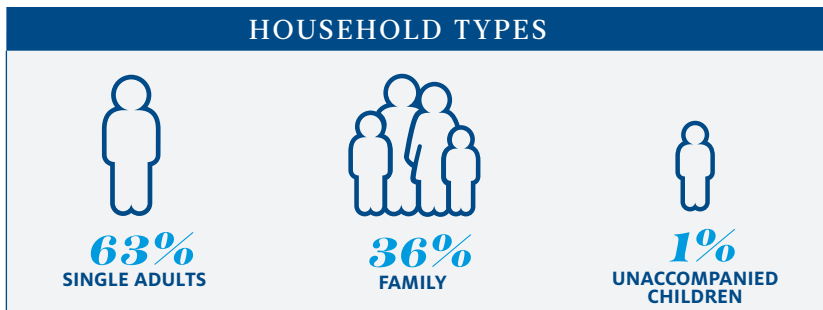
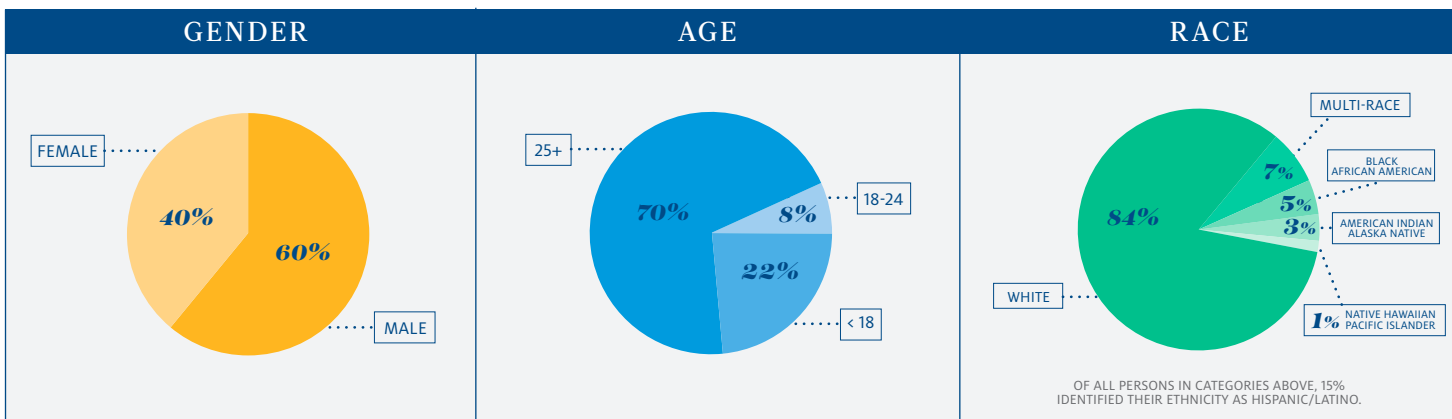
STATEWIDE

POINT-IN-TIME HOMELESSNESS COUNT

TOTAL HOMELESS PERSONS

2,012

SHELTERED	HOMELESS COUNT ↓ 1% SINCE 2017	UNSHELTERED
1,289		723



SUBPOPULATIONS

VETERANS	215
CHRONICALLY HOMELESS	324
VICTIMS OF DOMESTIC VIOLENCE	196
SUBSTANCE ABUSE	366
SERIOUS MENTAL ILLNESS	276

*Non-housing covers a broad definition of places that unsheltered persons stay that is not "on the streets" or in vehicles. It could be abandoned buildings, farm outbuildings, rest area, 24-hour establishment, condemned houses with no electricity, heat or water etc.

TOTAL HOMELESS PERSONS BY REGION



REGION	COUNTY	UNSHELTERED	SHELTERED	TOTAL
1	<i>Kootenai, Bonner, Boundary, Shoshone, Benewah</i>	90	138	228
2	<i>Latah, Clearwater, Nez Perce, Lewis, Idaho</i>	91	57	148
3	<i>Adams, Washington, Payette, Canyon, Elmore, Gem, Owyhee, Valley, Boise</i>	354	236	590
4	<i>Camas, Blaine, Gooding, Lincoln, Jerome, Twin Falls, Cassia, Minidoka</i>	23	79	102
5	<i>Bingham, Power, Oneida, Bannock, Caribou, Bear Lake, Franklin</i>	20	68	88
6	<i>Lemhi, Custer, Butte, Clark, Fremont, Madison, Teton, Bonneville</i>	24	76	100
7	<i>Ada</i>	121	635	756
TOTAL		723	1,289	2,012

Idaho's 14th annual Point-In-Time (PIT) count was conducted for the night of January 31st, 2018, by the Balance of State Continuum of Care (CoC) (Regions 1-6) and Boise City Ada County CoC (Region 7) and coordinated by Idaho Housing and Finance Association (IHFA). The primary goal of the PIT count is to provide a one-night "snapshot" of the number of homeless persons who are either living on the streets, in places not meant for habitation, or are currently residing in emergency shelters or homeless transitional housing projects. HUD's definition of homelessness for the PIT count does not include persons who may be staying with friends or relatives, in a hotel/motel, in a treatment facility, in jail, or in Rapid Re-housing or Permanent Housing project for formerly homeless persons.

Additional PIT Count information can be found at idahohousing.com/homelessness-services-programs/hmis/.